





Table of Contents

Company Introduction	3
Qualifications and Certifications	4
R&D Center	6
Track and Field	9





Taishan Sports Equipment Co., Ltd

Taishan is growing together with the development of the sports community. It has successfully served the Asian Games, the Universiade, and many other international sporting events. Every glorious moment in sports events provides a growing opportunity for our people. We have a rich history behind our brand and have become a trustworthy name in the international sports equipment industry. Taishan is the Official Supplier for 2008 Beijing Olympic Games, and provided tens of thousands of equipment in over 200 varieties, thus becoming the biggest equipment supplier in the history of Olympic Games. Over 40% of the gold medals were produced with Taishan equipment and we created the record of “Zero Faults, Zero Breakdowns and Zero Complaints”.

Integrity is a promise that we will keep to all users at every corner of the world. We pledge to do our part to support sportsmanship and bring the culture of sports to more places. Please join us in our journey to help the world enjoy sports! 🌍

Taishan Sports Equipment Co., Ltd. is located in the Economic and Technology Development Zone of Leling city, Shandong province. It is the wholly-owned subsidiary of the Taishan Sports Industry Group, and also the cornerstone and core of the group company. We are becoming the largest international sports equipment manufacturer that provides a variety of items. Our professional competition mats are a superior product of Taishan. Additionally, we provide mats for judo, wrestling, taekwondo, martial arts, and free combat, which are all made by the most advanced technologies and environmentally-friendly materials. All of these products are also certified by the international federations. We offer a range of competitive sports equipment, such as gymnastics, track and field, boxing, wrestling, weightlifting, cycling, wushu, sanda, and judo, which are all certified by the international federations as well. This equipment is not only used for competitions, but is also widely used in communities and schools.

Qualifications and Certifications

OFFICIAL SUPPLIER

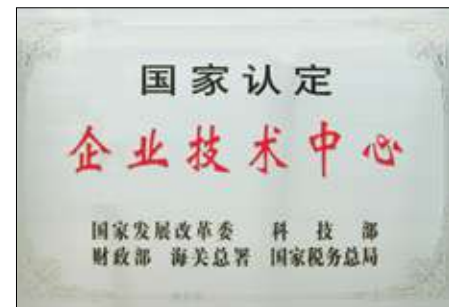
1. 2014 Universiade Taipei
2. Nanjing Youth Olympic Games
3. Thailand Chiang Mai Grand Alliance Boxing Championship
4. Official AIBA License
5. The 11th National Games
6. 2010 Guangzhou Asian Games
7. The 12th National Games
8. Beijing 2008 Olympic Games

Taishan Sports, the premier global sporting events supplier.



R&D Center

The Taishan Group has established a research and development partnership with the Beijing Sport University, as well as other well-known colleges, universities and research institutions. We have also successively cooperated with Shandong University to establish the Shandong University-Taishan Sports Equipment Research and Development Center and cooperated with the East China University Of Science and Technology to build the country's first sports new material research and development center called the East China University Of Science and Technology-Taishan Sports New Material Research and Development Center. All of which have provided a powerful guarantee for The Taishan Group in the professional, technology-based, and cutting-edge research and development. ✨



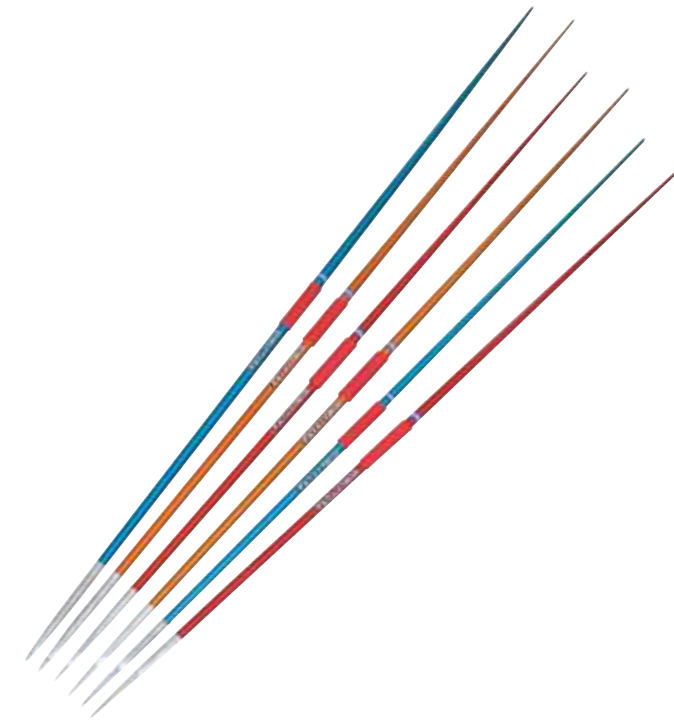
Track and Field



COMPETITION JAVELINS

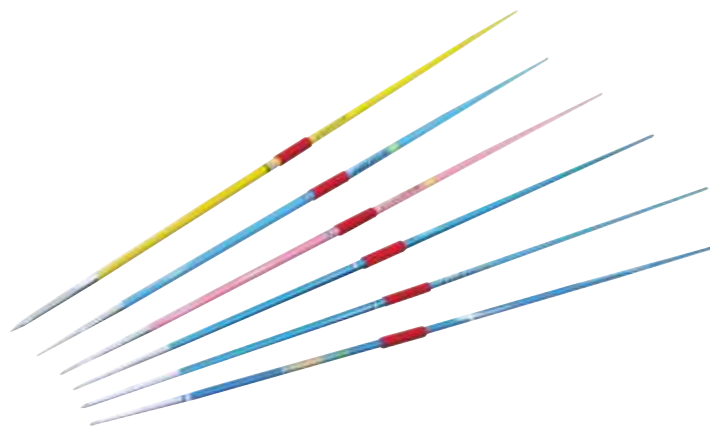
Model	Size	Weight	Material
PSQF4	2.6-2.7m	800g	Alloy
PSQF1	2.6-2.7m	800g	Alloy
PSQF5	2.6-2.7m	800g	Alloy
PSQF6	2.6-2.7m	800g	Alloy
PSQF3	2.3-2.4m	700g	Alloy
PSQF7	2.2-2.3m	600g	Alloy
PSQF2	2.2-2.3m	600g	Alloy
PSQF8	2.2-2.3m	600g	Alloy
PSQF9	2.2-2.3m	600g	Alloy
TSTOTJZBQ-A	2-2.1m	500g	Alloy

IAAF Approved 



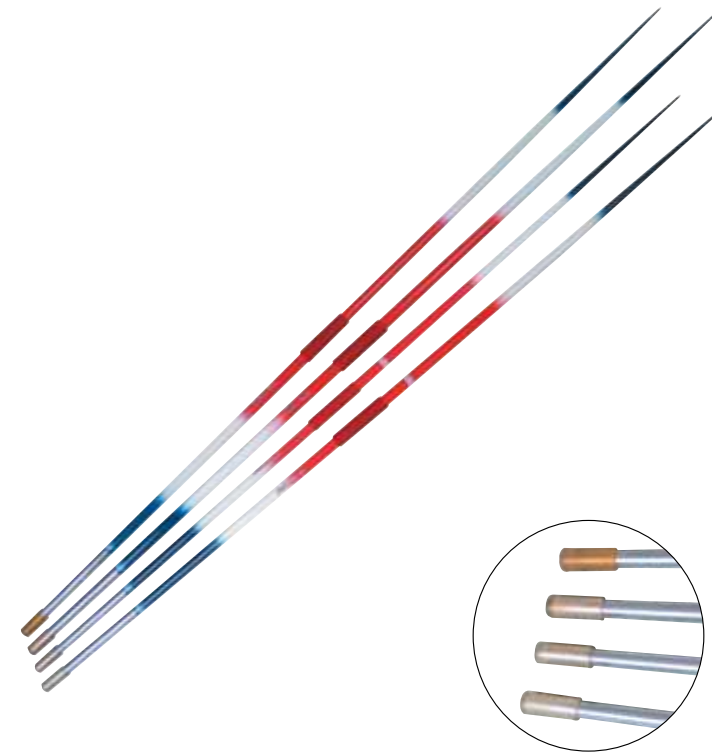
TRAINING JAVELINS

Model	Size	Weight	Material
BQX13	2.2-2.3m	600g	Alloy
BQX14	2.3-2.4m	700g	Alloy
BQX15	2.6-2.7m	800g	Alloy



COMPETITION JAVELINS

Model	Size	Weight	Material
PSQS21	2-2.1m	500g	Alloy
PSQS28	2-2.1m	500g	Alloy
PSQS29	1.9-2m	400g	Alloy
PSQS30	1.8-1.9m	300g	Alloy



RUBBER TIPPED JAVELINS

Model	Size	Weight	Material
BQX19	2.6-2.7m	800g	Alloy
BQX21	2.2-2.3m	600g	Alloy

JAVELIN CART

Model

TQ116

Size

934x678x967mm

Weight

40kg

Description

Made of high quality welded steel tube with good shape. Solid, reliable, and lightweight.



COMPETITION DISCUS

Model	Size	Weight	Material
TBS11	180-182mm	1kg	Steel and plastic
TBS12	180-182mm	1kg	Steel and plastic
PSSFB1.5	200-202mm	1.5kg	Steel and plastic
TBS14	210-212mm	1.4kg	Steel and plastic
TBS15	210-212mm	1.75kg	Steel and plastic
TBS16	210-212mm	1.75kg	Steel and plastic
TBS17	219-221mm	2kg	Steel and plastic
TBS18	219-221mm	2kg	Steel and plastic
TBS19	170-172mm	0.75kg	Steel and plastic
PSSFB2	180-182mm	1kg	Steel and plastic
TBS21	200-202mm	1.5kg	Steel and plastic
T104H	210-212mm	1.75kg	Steel and plastic
PSSFB1	210-212mm	2kg	Steel and plastic



PSSFB1.5, PSSFB2, T104H, & PSSFB1 are IAAF Approved



DISCUS CART

Model

TQ1131

Size

1100x678x967mm

Weight

44kg

Description

Made of high quality welded steel tube with good shape. Solid, reliable, and lightweight.



TRAINING DISCUS

Model	Size	Weight	Material
TBX13	170-172mm	0.75kg	Steel and plastic
TBX14	180-182mm	1kg	Steel and plastic
TBX15	180-182mm	1.25kg	Steel and plastic
TBX16	200-202mm	1.5kg	Steel and plastic
TBX17	210-212mm	1.75kg	Steel and plastic
TBX18	219-221mm	2kg	Steel and plastic
TBX19	220-222mm	2.25kg	Steel and plastic
TBX20	220-222mm	2.5kg	Steel and plastic



RUBBER DISCUS



Model	Size	Weight	Material
TBX22	180-182mm	1kg	Steel and plastic
TBX23	200-202mm	1.5kg	Steel and plastic
TBX24	210-212mm	1.75kg	Steel and plastic
TBX25	210-212mm	2kg	Steel and plastic

TELECONTROLLED RETURN CART



Model

TQ2136

Size

760x510x280mm

Weight

13kg

Description

Using 2.4G frequency, a 900W brushless motor, 12-volt rechargeable battery, the speed of the cart can be up to 25km/h when on grass. Maximum load: 10kg. Battery life: 50 min.

DISTANCE MARKER

Model

BZH13

Size

Height: 40cm

Weight

8kg

Description

Used for javelin and discus.



TOP GRADE COMPETITION SHOT PUTS



Model	Size	Weight	Material
QQS1	Ø125	7.26kg	Carbon steel
QQS11	Ø110	7.26kg	Carbon steel
QQS12	Ø113	7.26kg	Carbon steel
QQS131	Ø116	7.26kg	Carbon steel
QQS14	Ø120	7.26kg	Carbon steel
QQS15	Ø125	7.26kg	Carbon steel
QQS16	Ø129	7.26kg	Carbon steel
QQS2	Ø114	6kg	Carbon steel
Q413	Ø105	6kg	Carbon steel
QQS22	Ø110	6kg	Carbon steel
QQS23	Ø115	6kg	Carbon steel
QQS24	Ø120	6kg	Carbon steel
QQS3	Ø107.5	5kg	Carbon steel
TSTOTJQSQ-A	Ø100	5kg	Carbon steel
QQS32	Ø105	5kg	Carbon steel
QQS33	Ø110	5kg	Carbon steel
QQS34	Ø115	5kg	Carbon steel
QQS4	Ø100	4kg	Carbon steel
FLF720	Ø95	4kg	Carbon steel
QQS41	Ø99	4kg	Carbon steel
QQS43	Ø103	4kg	Carbon steel
QQS441	Ø106	4kg	Carbon steel
QQS46	Ø109	4kg	Carbon steel
QQS5	Ø90.5	3kg	Carbon steel

Q413, TSTJQSQ-A, FLF720 are IAAF Approved 

NORMAL COMPETITION SHOTS



Model	Size	Weight	Material
QQP04	Ø121.5	7.26kg	Carbon steel
QQP05	Ø114	6kg	Carbon steel
QQP06	Ø107.5	5kg	Carbon steel
QQP07	Ø100	4kg	Carbon steel
QQP08	Ø90.5	3kg	Carbon steel



DISTANCE MARKER

Model

BZH14

Size

Height:40cm

Weight

8kg

Description

Used for shotput.



SHOT PUT CART

Model

TQ1129

Size

937x678x967mm

Weight

40kg

Description

Made of high quality welded steel tube, has a beautiful design and is solid and reliable. Whole series size shot puts can be placed and transported.



SHOT PUT CONVEYOR

Model

TQ1111

Size

20515x240x605mm

Weight

90kg

Description

Made of high quality welded steel tube, has a beautiful design and is solid and reliable



TOP GRADE COMPETITION HAMMERS

Model	Size	Weight	Material
FLF610	Ø110	7.26kg	Carbon steel
LQS12	Ø113	7.26kg	Carbon steel
LQS131	Ø116	7.26kg	Carbon steel
LQS14	Ø120	7.26kg	Carbon steel
LQS15	Ø125	7.26kg	Carbon steel
LQS16	Ø129	7.26kg	Carbon steel
L407	Ø105	6kg	Carbon steel
LQS172	Ø110	6kg	Carbon steel
LQS173	Ø115	6kg	Carbon steel
LQS174	Ø120	6kg	Carbon steel
LQS181	Ø100	5kg	Carbon steel
LQS182	Ø105	5kg	Carbon steel
LQS183	Ø110	5kg	Carbon steel
LQS184	Ø115	5kg	Carbon steel
FLF620	Ø95	4kg	Carbon steel
LQS20	Ø99	4kg	Carbon steel
LQS21	Ø103	4kg	Carbon steel
LQS221	Ø106	4kg	Carbon steel
LQS23	Ø109	4kg	Carbon steel

FLF610, L407, FLF620 are IAAF Approved 

NORMAL COMPETITION HAMMERS

Model	Size	Weight	Material
LQP11	Ø121.5	7.26kg	Carbon steel
LQP12	Ø114	6kg	Carbon steel
LQP13	Ø106	5kg	Carbon steel
LQP14	Ø100	4kg	Carbon steel
LAP15	Ø93.5	3kg	Carbon steel





TRAINING HAMMERS

Model	Size
LQP16	Ø110mm
LQP17	Ø120mm
LQP18	Ø130mm



HAMMER HANDLE

Model
LQP201

Weight
0.6kg

Description
Made of aluminum alloy with spring steel.

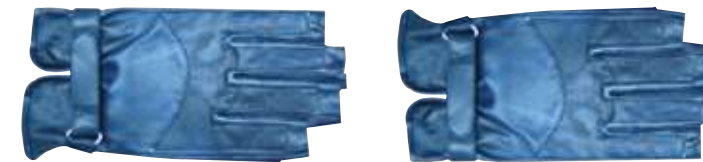


HAMMER CART

Model
TQ1130

Size
937x678x967mm

Description
Made of high quality welded steel tube, with a beautiful appearance, and is solid and reliable. Whole series size of hammers can be places and transported easily and conveniently.



HAMMER GLOVES

Model
LQP202

Size
250g

Description
Made of sheepskin.

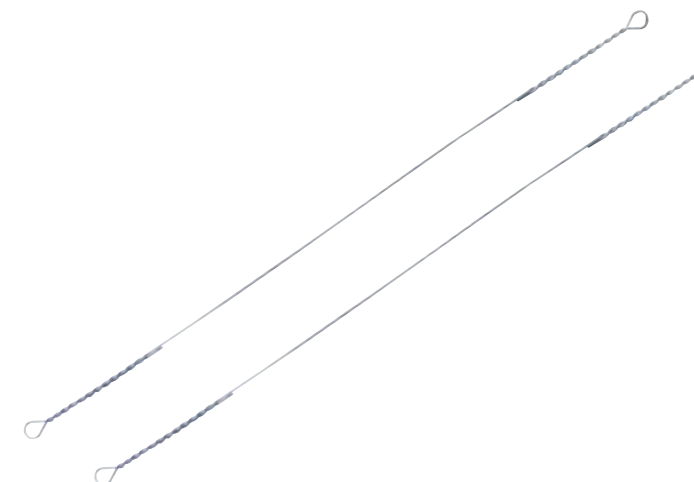


HAMMER HANDLE

Model
LQP20

Weight
0.5kg

Description
Made of aluminum alloy with spring steel.



HAMMER WIRE

Model
LQP19

Size
1195-1125mm

Weight
30g

Description
Made of spring steel.



COOLING UNIT

Model

QT16

Size

590x290x310m

Weight

320kg

Description

Ceramic piston pump, sprays up to 3L, 3/HP horsepower, 230V/50HZ voltage.



REMOVABLE MAGNESIUM POWDER BOX

Model

QT022

Size

Height:1.1m

Weight

17kg

Description

Painted iron Base, Glass Box
Performance:used to hold magnesium powder.

THROWING IMPLEMENTS STAND

Model

TQ2102

Size

1143x750x1058mm

Description

This product is made of high quality welded steel tube, can be used for put shot, hammer, javelin, discus.



UPRIGHTS POLE VAULT

Model

FLF500

Size

600x2000x6500mm

Weight

200kg

Description

Made of a cast iron base, and aluminum alloy pillars.

IAAF Approved 





ELECTROMOTIVE POLE VAULT

Model

FLF500E

Size

1800x700x6500mm

Weight

1600kg

Description

The material of the main stand is high quality aluminum alloy, and main structure is steel. Using advanced PLC computer control systems and precise drive rails, the transmission system can increase lift accuracy to 0.2mm and increase lifting speed up to 0.8m/s. Height and width adjustments can be made at the same time. Operating power: 2400W, voltage: 220W.

IAAF Approved



POLE VAULT UPRIGHT METER

Model

CHG191

Size

6.4m

Weight

4kg

Description

Made of aluminum alloy. Used to measure height.



CROSSBARS BRACKET

Model

CHG18

Size

5m

Weight

3kg

Description

Used to hold crossbars.



POLE VAULT UPRIGHT CROSSBAR

Model	Size	Weight	Material
CHG17	4.5m	2kg	Carbon fiber
CHG16	4.5m	2.5kg	Aluminum Alloy
FLF510	4.5m	2.23kg	Fiberglass

FLF510 is IAAF Approved





PROTECTIVE CANOPY FOR POLE VAULT UPRIGHT PAD

Model

TQ2104B

Size

8400x6640x1680mm

Weight

600kg

Description

Made of high quality welded steel tube. It is the auxiliary equipment of landing pad, mainly used in the protection of landing pads. Can be produced in blue or white.



VAULTING POLE STAND

Model

TQ1128

Size

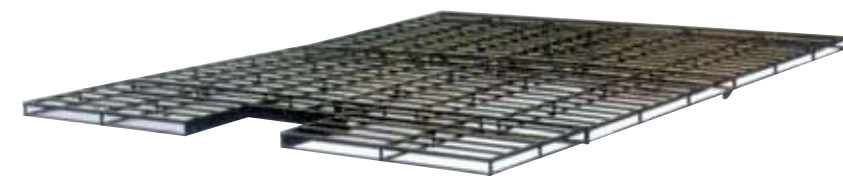
553x506x1050mm

Weight

10kg

Description

Made of high quality welded steel tube, has a beautiful design, and is solid and reliable.



BASE SUPPORT OF POLE VAULT LANDING PAD

Model

TQ1147

Size

8800x6600x(85-100)mm

Weight

200kg

Description

Made of high quality welded steel tube. It is waterproof and beathable, and used to protect the landing pad.



POLE VAULT BOX

Model

FLF530

Size

600x408x1084mm

Weight

30kg

Description

Made of stainless steel.

IAAF Approved





TRAINING POLE VAULT LANDING AREA

Model

TQ2528

Size

6000x8000x800mm

Description

Made of high quality PVC mesh, PVC warp knitting cloth, and XPE. For pole vault competitions and training.

IAAF Approved 

POLE VAULT DISPLAY

Model

CHG20

Size

1x2m

Weight

10kg

Description



POLE VAULT SCOREBOARD

Model

CHG20

Size

1x2m

Weight

10kg

Description

Adjustable whiteboard. Square tube spray paint base.



CROSSBAR CART

Model

TQ1109

Size

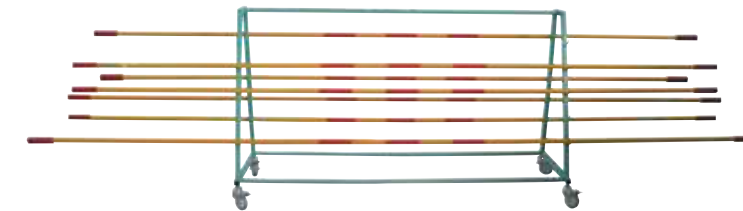
2060x620x143mm

Weight

34kg

Description

Made of high quality welded steel tube. Has a beautiful appearance, is solid and reliable, lightweight and convenient.





HIGH JUMP UPRIGHTS

Model

TG13

Size

Height: 1.7m

Weight

10kg

Description

Features a cast iron base, and aluminum alloy pillars.



COMPETITION HIGH JUMP LANDING AREA

Model

TQ1530

Size

4500x6000x850mm

Description

Made of high quality PVC mesh, PVC warp knitting cloth, and XPE. For Fosbury flop high jump competition and training.



TOP GRADE HIGH JUMP UPRIGHTS

Model

FLF400

Size

Height: 1.7m

Weight

26kg

Description

Made of cast iron base, with aluminum alloy pillars.

IAAF Approved



TRAINING HIGH JUMP LANDING AREA

Model

TQ2582

Size

3500x5000x700mm

Description

Made of high quality PVC mesh, PVC warp knitting cloth, and XPE. For Fosbury flop high jump training.

HIGH JUMP LANDING AREA

Model	Size (mm)
TQ2598	2000x3000x300mm
TQ2599	1500x3000x300mm
TQ2600	1000x3000x300mm
TQ2601	1800x3600x300mm
TQ2583	3500x5000x600
TQ2584	3500x5000x500
TQ2585	4000x6000x700
TQ2589	3000x3000x400
TQ2590	2000x4000x400
TQ2602	1200x2400x300mm
TQ2603	1500x2000x300mm
TQ2595	2440x3000x350
TQ2596	2000x3000x350
TQ2597	1500x3000x350
TQ1143	4500x338x376mm

Description

Made of high quality PVC mesh, PVC warp knitting cloth, and XPE. For Fosbury flop high jump competition and training.

IAAF Approved 



PROTECTIVE CANOPY FOR HIGH JUMP LANDING PAD

Model

TG231

Size

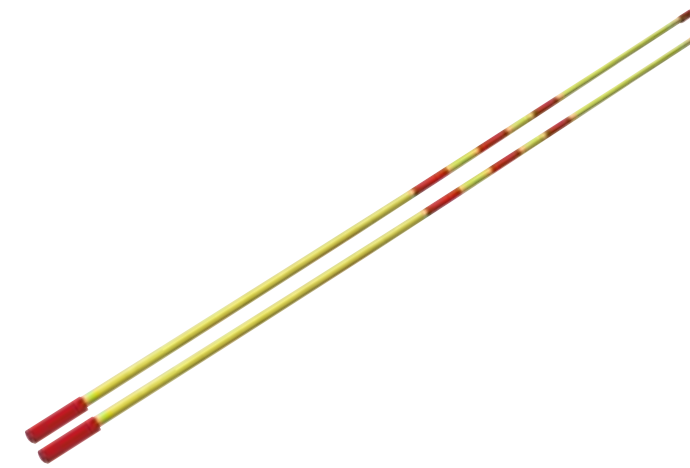
5000x7000x 1400mm

Weight

600kg

Description

High quality welded steel pipe. Easy and convenient to move.



CROSSBARS

Model	Size	Weight	Material
TG16	4m	2kg	Carbon fiber
TG15	4m	2kg	Carbon fiber
TG161	4m	2kg	Carbon fiber

TG161 is IAAF Approved 



HIGH JUMP METER

Model

TG17

Size

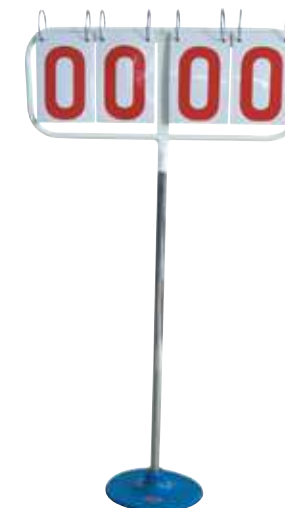
1,2m

Weight

2kg

Description

Made of aluminum alloy.



HIGH JUMP SCOREBOARD

Model

TG18

Size

1.2x0.8m

Weight

15kg

Description

Features a cast iron base and stainless steel pillars.



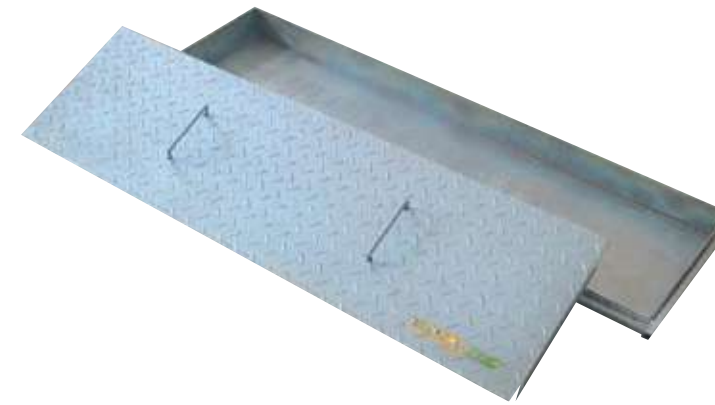
HEIGHT AND DISTANCE SCOREBOARD

Model
TG13

Size
0.8x2.1m

Weight
25kg

Description
Features a rubber bottom wheel and a plastic turn points card.



FOUNDATION TROUGH

Model
TY03

Size
1220x360x120mm

Weight
10kg

Description
Made of galvanized iron.



TAKE-OFF BOARD

Model
FLF900

Size
1220x340x100mm

Weight
8kg

Description
Made of wood and finished with paint varnish.



FOUNDATION TROUGH

Model
TY031

Size
1250x360x120mm

Weight
10kg

Description
Made of galvanized iron.



TAKE-OFF BOARD

Model
TY01

Size
1220x200x100mm

Weight
5kg

Description
Made of wood and finished with paint varnish.



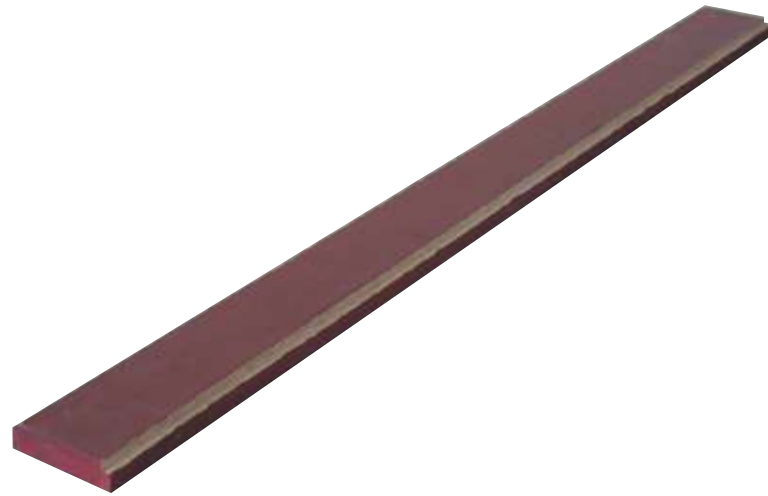
TAKE-OFF BOARD

Model
TY021

Size
1220x340x100mm

Description

Made of wood and finished with paint varnish.



PLASTICINE BOARD

Model

TY05

Size

1.2x0.1m

Weight

1kg

Description

Made of wood and finished with paint varnish.



POWER-DRIVEN SAND RECOVERING DEVICE

Model

QT01-1

Size

3220x1200x640mm

Weight

1100kg

Description

Features a main frame, fixed hood, two openable and closable shrouds, two driven wheels, one plow shaft, one rotary tiller, one set of front scrapers, and a set of rear scrapers, group of 48vDC batteries, and a 48v DC charger.



PLASTICINE SCRAPER

Model

TY06

Size

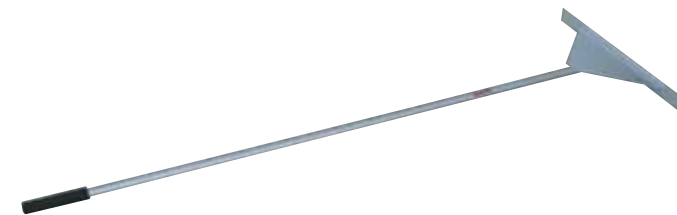
30x50mm

Weight

150g

Description

Made of high quality steel.



LEVEL RAKE

Model

QT01

Size

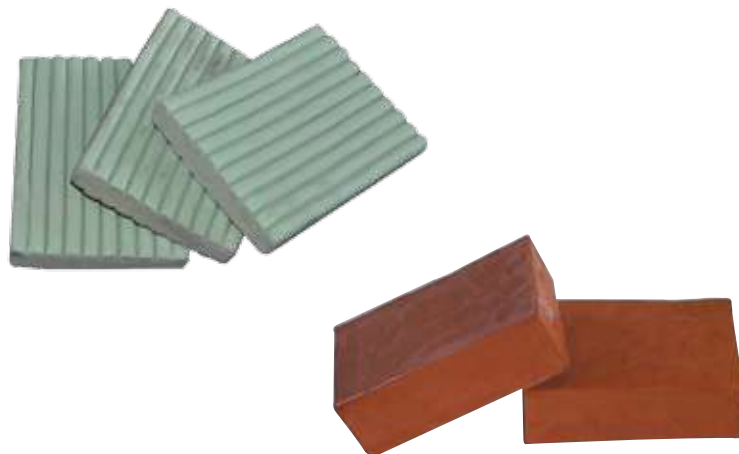
2.5m

Weight

5kg

Description

Made of aluminum alloy.



PLASTICINE

Model

TY07

Description

Used for long jump.



TAKE-OFF MARKER

Model

TY08

Size

400x30m

Weight

4kg

Description

Made of fiberglass.



STOP MARKER

Model

BZH01

Size

Height: 750mm

Weight

5kg

Description

Made of plastic.

SHOT PUT THROWING CIRCLE

Model

FLF920

Size

Ø: 2.135m

Weight

30kg

Description

Made of stainless steel.



STEP MARKER

Model

TY09

Size

80X80mm

Weight

100g

Description

Made of acrylic.

DISCUS THROWING CIRCLE

Model

FLF910

Size

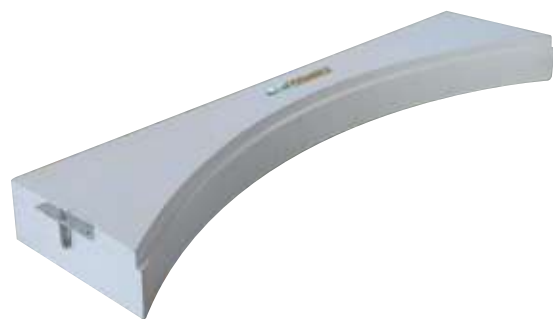
Ø: 2.5m

Weight

30kg

Description

Made of stainless steel.



STOP BOARD

Model

FLF740

Size

112-300x1210x112-300mm

Weight

15kg

Description

Wood with paint varnish.



THROWING CIRCLE DISCUS/HAMMER

Model

TZH041

Size

Outer Ø: 2.5m

Weight

30kg

Description

Made of stainless steel.





MARKER FLAG

Model

TQ1145

Size

Height: 700mm

Weight

3kg

Description

Carbon steel frame and silk flag.



DISTANCE MARKER

Model

TSH1015

Size

XS / S / M / L / XL / 2XL / 3XL

Description

Available in black, white, pink, red, rose red, royal blue, and light blue.



DIRECTION FLAG

Model

TQ1136

Size

Height: 700mm

Weight

3kg

Description

Carbon steel frame and silk flag. Used to mark direction.



MARKING TAPE CART

Model

TQ1137A

Size

700x250x972mm

Weight

40kg

Description

Made of carbon steel, has a beautiful design, is solid and reliable.



DISCUS THROWING CAGE

Model

TQ2013

Size

12500x6990x4453mm

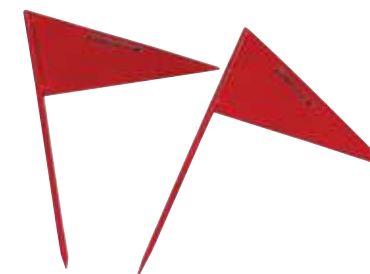
Weight

2200kg

Description

Made of high quality carbon steel. Easy to assemble and can withstand the impact of a discus.

IAAF Approved 



RECORD OF IRON FLAG

Model

TQ1135

Size

230x188mm

Weight

0.5kg

Description

Made of carbon steel and is easy to carry.



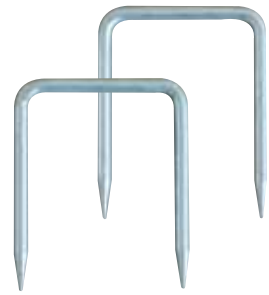
PEG

Model
TQ1120A

Size
250mm

Weight
0.5kg

Description
Made of carbon steel and is easy to carry.



U-NAIL

Model
CHE172

Size
Width: 520mm

Description
Made of galvanized iron.



SHOE TACK DETECTOR

Model
JS231

Size
80x80

Weight
380g

Description
Made of stainless steel.



FIXED THROWING CAGE

Model
TQ2108A

Size
1200x8660x10572mm

Description
Made of carbon steel. Is easy to disassemble, can effectively resist the hit against a discus or hammer.



REMOVABLE THROWING CAGE

Model
TQ2108

Size
13430x11570x10572mm

Description
Made of carbon steel. Is easy to disassemble, can effectively resist the hit against a discus or hammer.



COMPETITION HURDLE

Model

TQ1118

Size

1198x698x762/838/914/991/1067mm

Weight

13kg

Description

Made of high quality carbon steel and has the ability to be adjusted smoothly.

IAAF Approved 



TOP BAR

Model

JS14

Size

1190x70mm

Weight

0.5kg

Description

Made of plastic



HURDLE CART

Model

TQ2112

Size

1480x1060x943mm

Weight

48kg

Description

Made of carbon steel, has a beautiful design, is solid and reliable, and has easy and convenient transportation.



TRAINING HURDLE

Model

JS13

Size

1.067, 0.991, 0.914, 0.838, 0.762m

Weight

12kg

Description

Square tube and welded riser for the steel, hurdles for the plastic material.



HURDLE METER

Model

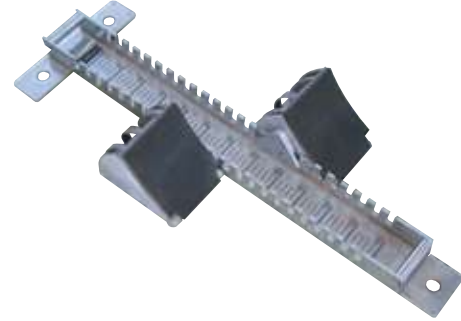
JS15

Size

1.2m

Description

Made of stainless steel.



TOP GRADE STARTING BLOCK

Model

FLF300

Size

800x400mm

Weight

15kg

Description

Made of aluminum alloy.



RELAY BATON

Model

FLT350

Size

28-30cm, Ø 38-42mm

Weight

50g

Description

Made of aluminum alloy.



TRAINING STARTING BLOCK

Model

JS22

Size

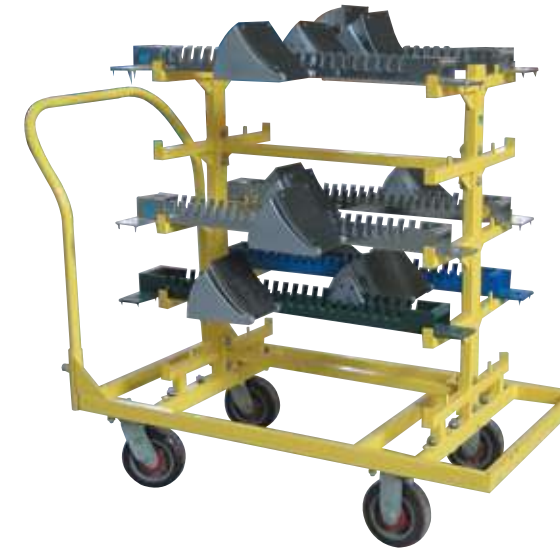
800x360mm

Weight

11kg

Description

Made of steel.



STARTING BLOCK CART

Model

TQ1121

Size

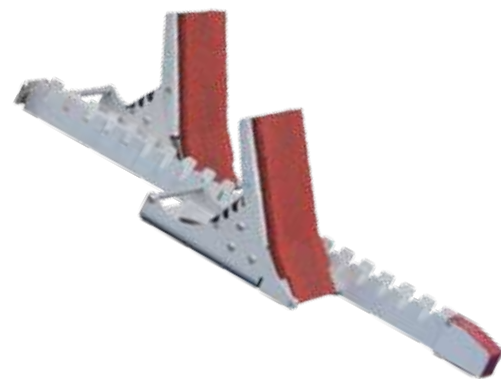
1421x600x1248mm

Weight

38kg

Description

Made of carbon steel, has high stability and can be transported easily.



TOP GRADE STARTING BLOCK

Model

JS23

Size

800x400mm

Weight

15kg

Description

Made of aluminum alloy.



OBSTACLE CART

Model

TQ1108

Size

1026x823x755mm

Weight

25kg

Description

Made of carbon steel. Can provide necessary transit to load and unload obstacles.



STEEPLECHASE BARRIER

Model

TQ2109

Size

5000x1213x762-914mm

Weight

80-100kg

Description

Made of carbon steel, is firmly welded, and is waterproof.

IAAF Approved 



JUDGE'S STAND

Model

TL11

Size

6.4X3.2X3.7m

Weight

280kg

Description

Has a steel body and plastic seat.



STEEPLECHASE BARRIER, WATER JUMP BARRIER

Model

TQ211A

Size

3660x127x762-914mm

Weight

80-100kg

Description

Made of carbon steel and pine wood. Firmly welded and easy to install. Waterproof.

IAAF Approved 



TLESCOPIC JUDGE'S STAND

Model

TL12

Size

4.5x2.5x3.5m

Weight

300kg

Description

Has a steel body and plastic seat.



WALKING RACE BREAK RULES MARKER

Model

PAI10

Size

Handle length: 16cm
Ø 120mm

Weight

300kg

Description

Acrylic round card, crystal handle.



WALKING RACE BREAK RULES WARNING MARKER

Model

PAI11

Size

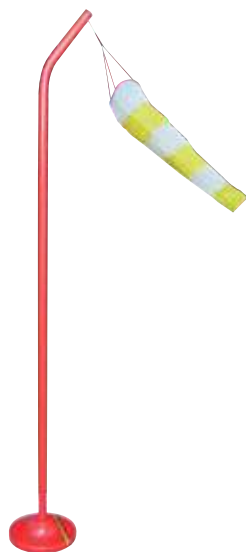
1x2m

Weight

25kg

Description

Square tube spray paint base, white board made from galvanized



WIND INDICATOR

Model

TQ1132

Size

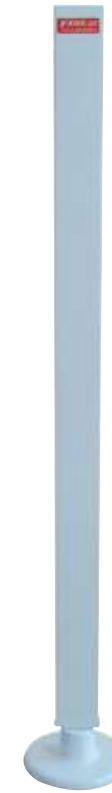
240x162x1470mm

Weight

5kg

Description

Made of carbon steel and high quality silk. Used for easuring wind direction.



FINISH POST

Model

TQ1127

Size

Ø200mx1400mm

Weight

7.6kg

Description

Made of carbon steel. Used for fixing finish ribbons at track events.



STARTER STAND

Model

TQ1146

Size

Ø200x1400mm

Weight

70kg

Description

Made of carbon steel. Sturdy and durable construction, includes clear smoke screen. Height of smoke screen can be modified.



LAP COUNTER

Model



STARTER'S GUN

Model

FL13

Size

20x13cm

Weight

3kg

Description

Made of steel



BELL

Model

PA1121

Size

20x12cm

Weight

6kg

Description

Made of brass material.



STARTER'S GUN

Model

FL131

Size

20x14cm

Weight

2.5kg

Description

Made of steel.



LAP COUNTER COUNTING BOARD

Model

TQ2131A

Size

Height: 1500mm

Weight

25kg

Description

Made of carbon steel. Comes with easy to read 10" digits (0-9) and a large bell.



STARTER'S RAGLAN SLEEVE

Model

TQ2559

Size

Ø240x350mm

Description

Made of silk cloth. Color is customizable.



JUDGE'S HAND FLAG

Model

QZ03

Size

30x40cm

Weight

400kg

Description

Sponge hand pad, aluminum handle, and silk flag.



MARKER FLAG

Model

TQ1145

Size

Height: 700mm

Weight

3kg

Description

High quality carbon steel and silk flag. Has a stable base.



TORTUOUS LANE FLAG

Model

TQ1134

Size

252x290x399mm

Weight

3kg

Description

Carbon steel stand and silk flag.



RACETRACK RIVALED FLAG

Model

TQ1142

Size

Height: 1500mm

Weight

5kg

Description

High quality carbon steel and silk flag. Used to mark each lane.



DIRECTION FLAG

Model

TQ1136

Size

Height: 700mm

Weight

3kg

Description

High quality carbon steel and silk flag. Used to mark direction.



TORTUOUS LANE MARKER

Model

BZH02

Size

Height: 35cm

Weight

75kg

Description

Made of orange plastic.



LANE RACE BREAK RULES MARKER

Model
BZH09

Size
10.5x14.5cm

Weight
15g

Description
Made of PVC.



LANE MARKER BOX

Model
BZH08

Size
Height: 41cm

Weight
6kg

Description
Made of fiberglass.



RACETRACK RIVALED MARKER

Model
TQ1154

Size
199x50x155mm

Weight
0.5kg

Description
Made of carbon steel. Has a simple structure and high stability.



LANE MARKER BOX

Model
BZH081

Size
Height: 42cm

Weight
5kg

Description
Made of fiberglass.



LANE MARKER BOX

Model
BZH07

Size
Height: 40cm

Weight
8kg

Description
Made of fiberglass.



PLAYGROUND CART

Model
TQ2115

Size
2084x1000x1025mm

Weight
55kg

Description
Carbon steel frame with wooden planks. Used to transport loads of several items.



WATER SUCTION SWEEPER

Model

CHE11

Size

Ø 800mm

Weight

50kg

Description

Steel pipe main body with large casters.



SCORE-CALL BOARD

Model

PA109

Size

1x2m

Weight

25kg

Description

Square tube spray paint base, white board made of galvanized material.



LINE MARKER PUSH CART

Model

CHE12

Size

1x1m

Weight

10kg

Description

Steel pipe main body with large casters.



AWARD STAND

Model

TQ1106

Size

6x 0.6x(0.55, 0.4, 0.2)m

Weight

50kg

Description

Made of carbon steel with wooden planks.



WATER-SUCTION SWEEPER

Model

CHE10

Size

Ø 600mm

Weight

43kg

Description

Steel pipe main body with large casters.



FIXED EQUIPMENT

Model

FLT400

Size

00.4x0.6x400m

Weight

350kg

Description

Fixed equipment for track kerb. Made of aluminum alloy.



WOODEN LOUNGE FOR ATHLETES

Model
TQ2135

Size
2549x1657x2528mm

Weight
160kg

Description
To seat athletes and coaches.
Contains a curtain to shield sunlight and rain.



LOTS AND CANISTER

Model
QT04

Size
40x30cm

Weight
1kg

Description
Made of bamboo.



WOODEN BENCH

Model
TQ2122

Size
2000x300x415mm

Weight
25kg

Description
To seat athletes and coaches.



STOPWATCH

Model	Size	Weight
GSH11	12x12x2cm	50g
GSH12	12x12x2cm	51g
GSH13	12x12x2cm	52g

Description
Electronically controlled.



MEASURING TAPE

Model	Size	Weight	Material
CL11	40x125cm	1.75kg	Steel
CL12	40x26cm	1.5kg	Steel
CL13	40x27cm	1kg	Steel
CL15	40x28cm	1kg	Steel
CL16	40x29cm	0.5kg	Fiber



MEGAPHONE

Model
QT13

Size
40x16cm

Weight
0.8kg

Description
Electronically controlled.

Taishan Sports United States, Inc.

1900 Alameda de las Pulgas, Suite 111
San Mateo, CA 94403

W | www.taishansports.us
T | +1 (415) 890-4770
F | +1 (415) 890-4720
E | sales@taishansports.us

Taishan Sports Equipment Co., Ltd.

No. 1 Taishantiyu Road
Leling, Shandong, China 253600

W | www.taishansports.com
T | +86-10-6710-2426
F | +86-10-6712-2488

